



St Gabriel's C of E Primary School

WEEKLY NEWSLETTER FRIDAY 7th FEBRUARY 2025



THIS WEEK'S AWARDS:



HEADTEACHER'S GOLD AWARD:
Greyson S in Year 1 for always trying hard



STARS OF THE WEEK:



| | |
|-----------|---------|
| Nursery | Vince |
| Reception | Elsie |
| Year 1 | Luca |
| Year 2 | Thomas |
| Year 3 | Lorna |
| Year 4 | Reggie |
| Year 5 | Finley |
| Year 6 | Matthew |



REVEREND COOK:

| | |
|-----------|-----------|
| Nursery | Meghan |
| Reception | Nevaeh |
| Year 1 | Greyson S |
| Year 2 | Karyss |
| Year 3 | Jacob |
| Year 4 | Joanna |
| Year 5 | Lyla |
| Year 6 | Lexi-Ann |

READING W/C 27.01.25:

| Class | Read 3 Times | Winners |
|-------|--------------|-----------|
| N | 70% | Emmanuel |
| R | 71% | Erin |
| Yr 1 | 37% | Arielle |
| Yr 2 | 50% | Thea-Rose |
| Yr 3 | 62% | Alfie Mc |
| Yr 4 | 56% | Joseph |
| Yr 5 | 60% | Freddie |
| Yr 6 | 62% | Nevaeh |

LUNCHTIME AWARDS:



Class: Year 4
EYFS & KS1: Lorryah
KS2: Tanatswa



MENTAL HEALTH WEEK!

The Life Education Bus visited on Thursday & Friday to work with each class on resilience, looking after their mental health, recognising their feelings, etc.

ATTENDANCE FOR THIS WEEK:



Whole School: 95.2%
Class Winners: Year 4 with 99.6%

LATES:

This week **43** children were late arriving to school. It is really important that your children are on time. Children are late if they arrive after 9am. After 9:10 lates are unauthorised. Thank you to all parents/carers who are getting children to school on time every day. Each half term we will be sending a letter out with your child's attendance— please look out for this.

AFTER SCHOOL ACTIVITIES:

under review when swimming starts

| | COLLECT @ 4:20PM | COLLECT @ 4PM UNLESS STATED |
|------|--------------------|-------------------------------|
| MON | KS2 MULTI-SPORTS | |
| TUES | KS2 GIRLS FOOTBALL | |
| WED | Y5&Y6 FOOTBALL | SINGING CLUB UNTIL 4:15PM |
| THUR | KS2 BASKETBALL | Y3, Y4, Y5 & Y6 CROSS COUNTRY |
| FRI | Y3& Y4 FOOTBALL | |

DIARY DATES:

EVENT:

| | |
|----------|--|
| 12.02.25 | VALENTINES CRAFT EVENT |
| 14.02.25 | INSET DAY - No School |
| 02.04.25 | PARENTS EVENING - end of school till 7pm |
| 06.03.25 | World Book Day - children are invited to dress up as their favourite |
| 17.03.25 | BOOK FAIR is coming to school |



IMPORTANT REMINDERS:



PRICE REMINDERS:

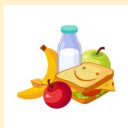


BREAKFAST CLUB £3.00 IN ADVANCE £3.50 ON DAY

AFTER SCHOOL CLUB £5.50 IN ADVANCE £6.00 ON DAY

NURSERY DINNER £1.70 PER DAY

Y3,4,5,6 DINNER £2.70 PER DAY



All can be paid for by bank transfer or with cash at the office.

The school bank details are: **Lloyd's Bank plc, Rochdale**

Sort Code: **308462** Account No.: **28999368**

Account Name: **RMBC ST GABRIELS CE PRIMARY SCHOOL**

Always quote your child's name and payment reason Eg., Joe Bloggs Dinner Money

ATTENDANCE REMINDERS: IF YOUR CHILD IS POORLY OR GOING TO BE LATE, PLEASE RING THE SCHOOL OFFICE AS EARLY AS POSSIBLE FROM 8AM EVERY DAY THAT YOUR CHILD IS NOT IN SCHOOL.

IF YOUR CHILD NEEDS TO ATTEND AN APPOINTMENT DURING SCHOOL HOURS EVIDENCE OF THE APPOINTMENT IS REQUIRED. WHENEVER POSSIBLE BOOK AFTER SCHOOL APPOINTMENTS.

IF YOU HAVE AN APPOINTMENT, YOUR CHILD MUST STILL ATTEND SCHOOL. WE HAVE BEFORE AND AFTER SCHOOL CLUBS TO HELP SUPPORT YOU.

ABSENT

Valentines Craft Event



Wednesday 12th February. 3.20pm - 4.30pm

An opportunity for the children to take part in some Valentine activities and raise some funds for school.

You can sign up for your child to take part at a cost of £3 - cash only. This will include some crafting, a snack and a raffle ticket for a chocolate raffle. Please sign up by Monday (10th February).

SCHOOL PE KIT:

All children with the exception of Nursery and Reception classes, are required to wear:



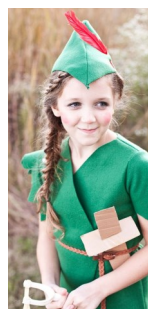
- ◆ White t-shirt
- ◆ Navy/black leggings or navy/black joggers
- ◆ A navy/ black tracksuit can be worn in colder weather
- ◆ Black pumps - in a bag to be kept in school. Please ensure that they are labelled with your child's name.
- ◆ Black trainers - worn to school and for outdoor PE.

Nursery and Reception children need to wear their school uniform and black trainers on their PE day.

WORLD BOOK DAY



Children can dress up as their favourite book character on Thursday 6th March.



EXTERNAL ACTIVITIES:

For more information, see the school noticeboard or ask at the office

| DATE | ACTIVITY | VENUE |
|----------|----------------------|--|
| 19.02.25 | SEND DROP IN SESSION | NUMBER ONE, RIVERSIDE, SMITH ST, ROCHDALE OI16 1XU |

HEAD TEACHERS THOUGHT FOR THE WEEK:

Your mental health is first. If you aren't ok mentally, you won't be ok physically, emotionally, or internally. Take the rest, distance from negativity & take care of your thoughts.

-Heidi V.